

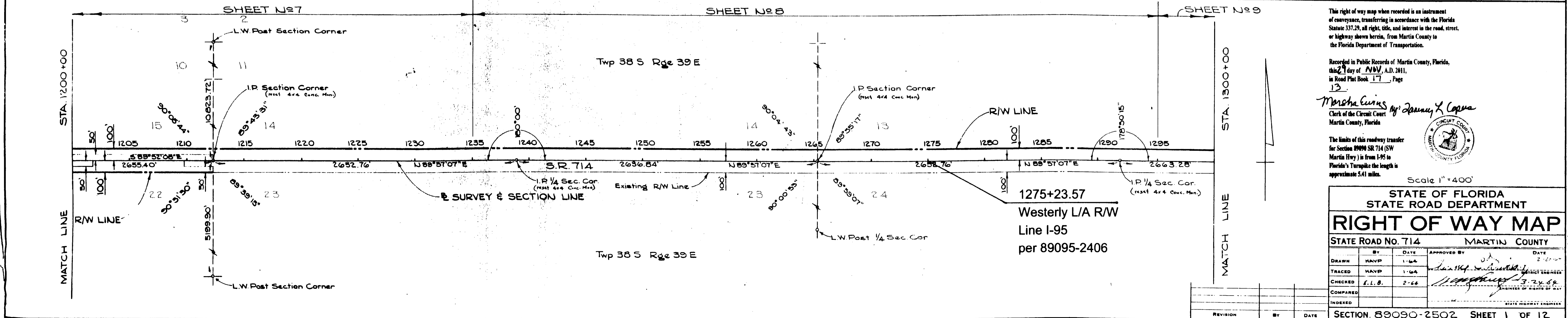
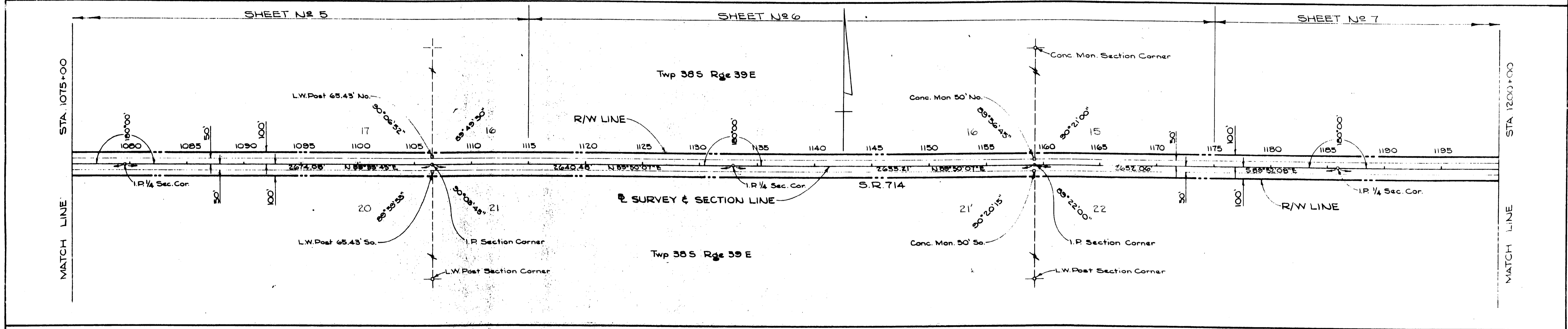
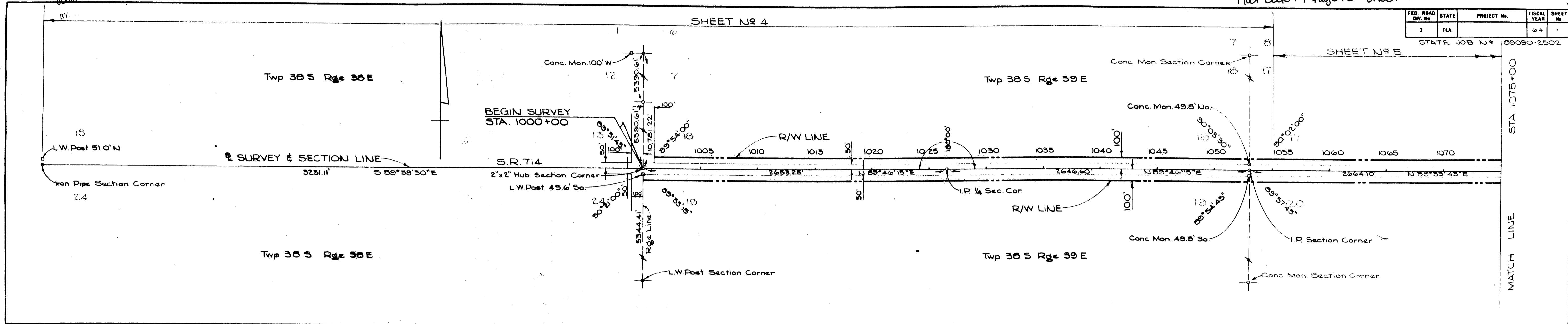
FILED FOR  
MARTIN COUNTY  
2011 NOV 29 AM 10:10  
CLEARANCE

Plat Book 17 Page 13 sheet 1 of 6

3

FED. ROAD DIV. No.	STATE	PROJECT No.	FISCAL YEAR	SHEET No.
3	FLA.		04	1

STATE JOB No. 89090-2502



This right of way map when recorded is an instrument of conveyance, transferring in accordance with the Florida Statute 337.39, all right, title, and interest in the road, street, or highway shown herein, from Martin County to the Florida Department of Transportation.

Recorded in Public Records of Martin County, Florida, this 21 day of NOV, A.D. 2011, in Road Plat Book 17, Page 13.

*Marsha Lewis* *Raymond L. Copua*  
Clerk of the Circuit Court  
Martin County, Florida

The limits of this roadway transfer for Section 89090 SR 714 (SW Martin Hwy) is from I-95 to Florida's Turnpike the length is approximately 5.41 miles.

Scale 1"=400'

STATE OF FLORIDA STATE ROAD DEPARTMENT				
<b>RIGHT OF WAY MAP</b>				
STATE ROAD No. 714		MARTIN COUNTY		
DRAWN	BY	DATE	APPROVED BY	DATE
TRACED	MAVDP	1-04		2-04
CHECKED	E.L.B.	2-06		3-24-06
COMPARED				
INDEXED				

SECTION. 89090-2502 SHEET 1 OF 12